

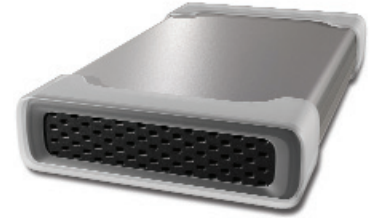
WD Elements™

External Hard Drives

Plug and Play Storage

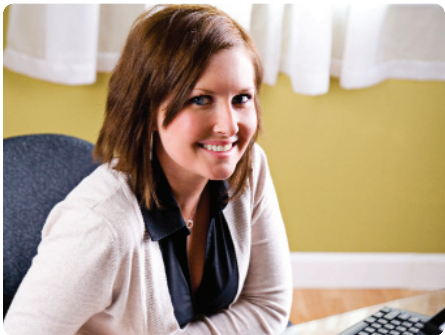
USB 2.0

Compact Metal Case



Plain, Simple, Reliable Add-on Storage in an Instant.

- **High-speed USB 2.0** – For maximum performance; backward compatible with USB 1.1 ports.
- **Plug and Play Storage** – Just plug it in, connect the cable to add high-speed storage for both desktop and notebook computers.
- **Rugged Metal Case** – Compact, durable metal case for extra data protection.



WD Elements USB 2.0 external hard drive is an easy-to-use, reliable way to add more storage to your PC or Macintosh®. Simply plug it in to a USB port and start saving or backing up your photos, music, video, and files. It's preformatted for immediate use so there's no software or CD to load. The compact, durable metal case provides extra data protection helping keep data safe from loss. Certified for use with Windows Vista™.



WD Elements

External Hard Drives

Product Specifications

| | |
|-------------------------------|--------------------|
| Data transfer rate | 480 Mb/s (maximum) |
| RoHS compliant ¹ | Yes |
| Limited warranty ² | 1 year |

Physical Dimensions

| | |
|--------|---------------------|
| Height | 8.02 in (203.82 mm) |
| Length | 1.42 in (36.14 mm) |
| Width | 4.90 in (124.68 mm) |
| Weight | 2.24 lb (1.02 kg) |

Packaging Specifications

| Box | English | Metric |
|---------------------------|--------------------------------|-----------------------------|
| Retail package size | 10.31 in x 5 in x 6.89 in | 262 mm x 127 mm x 175 mm |
| Retail package weight | 3.66 lb | 1.66 kg |
| Master carton size | 21.18 in x 10.55 in x 14.57 in | 538 mm x 268 mm x 370 mm |
| Master carton weight | 31.31 lb | 14.2 kg |
| Pkgs. per master carton | 8 | 8 |
| Master cartons per pallet | 24 | 24 |
| Pallet load size | 47.24 in x 43.31 in x 51.18 in | 1200 mm x 1100 mm x 1300 mm |
| Pallet load weight | 750 lb | 340.8 kg |

Retail UPC Codes

| Capacity ³ | PAN AMERICA | | AUSTRALIA/NEW ZEALAND | |
|-----------------------|----------------|-----------------|------------------------------|-----------------|
| | Order Number | UPC Code | Order Number | UPC Code |
| 250 GB | WDE1U2500N | 7 18037 11941 0 | WDE1U2500A | 7 18037 11966 3 |
| 320 GB | WDE1U3200N | 7 18037 11952 6 | WDE1U3200A | 7 18037 11967 0 |
| 400 GB | WDE1U4000N | 7 18037 11997 7 | WDE1U4000A | 7 18037 12000 3 |
| 500 GB | WDE1U5000N | 7 18037 11953 3 | WDE1U5000A | 7 18037 11968 7 |
| Capacity ³ | UNITED KINGDOM | | HONG KONG/SINGAPORE/MALAYSIA | |
| | Order Number | UPC Code | Order Number | UPC Code |
| 250 GB | WDE1U2500U | 7 18037 11956 4 | WDE1U2500H | 7 18037 11971 7 |
| 320 GB | WDE1U3200U | 7 18037 11957 1 | WDE1U3200H | 7 18037 11972 4 |
| 400 GB | WDE1U4000U | 7 18037 11998 4 | WDE1U4000H | 7 18037 12001 0 |
| 500 GB | WDE1U5000U | 7 18037 11958 8 | WDE1U5000H | 7 18037 11973 1 |
| Capacity ³ | EUROPE | | CHINA | |
| | Order Number | UPC Code | Order Number | UPC Code |
| 250 GB | WDE1U2500E | 7 18037 11961 8 | WDE1U2500C | 7 18037 12012 6 |
| 320 GB | WDE1U3200E | 7 18037 11962 5 | WDE1U3200C | 7 18037 12013 3 |
| 400 GB | WDE1U4000E | 7 18037 11999 1 | WDE1U4000C | 7 18037 12014 0 |
| 500 GB | WDE1U5000E | 7 18037 11963 2 | WDE1U5000C | 7 18037 12015 7 |

Environmental Specifications

| | |
|---------------------------|---------------|
| Operating temperature | 5°C to 35°C |
| Non-operating temperature | -20°C to 65°C |

Power Specifications

| | |
|--------------------|----------|
| AC input voltage | 100-240V |
| AC input frequency | 50-60 Hz |



For service and literature:

support.wdc.com
www.westerndigital.com

800.ASK.4WDC North America
949.672.7199 Spanish
+800.6008.6008 Asia Pacific
+31.20.4467651 EMEA

Western Digital, WD, the WD logo, and Put Your Life On It are registered trademarks; and WD Elements is a trademark of Western Digital Technologies, Inc. Other marks may be mentioned herein that belong to other companies. Product specifications subject to change without notice.

© 2007 Western Digital Technologies, Inc. All rights reserved.

Western Digital
20511 Lake Forest Drive
Lake Forest, California U.S.A. 92630

4879-705016-A00 Sep 2007

¹ WD hard drive products manufactured and sold worldwide after June 1, 2006, meet or exceed Restriction of Hazardous Substances (RoHS) compliance requirements as mandated by the European Union for electrical and electronic products. The RoHS Directive 2002/95/EC of the European Parliament, which is effective in the EU beginning July 1, 2006, aims to protect human health and the environment by restricting the use of certain hazardous substances in new equipment, and consists of restrictions on lead, mercury, cadmium, and other substances.

² One-year limited warranty unless otherwise required by law.

³ One gigabyte (GB) = one billion bytes. One terabyte (TB) = one trillion bytes. Total accessible capacity varies depending on operating environment.